

# Out & About

with  
**Great Start  
Wayne** ★

Your guide to Find Help, Find Fun, and find all things family in Detroit and Wayne County!



GREAT START  
COLLABORATIVE  
Detroit/Wayne County

# Welcome!

Having fun together as a family is a great way to build lasting bonds, create learning opportunities and boost happiness for everyone. It's so important that we have scouted Wayne County for all kinds of free and low-cost family fun for all interests. Enjoy!

## Change is Constant! Call ahead instead...

Our team works year 'round to share the most current and correct information and resources with families of young children. But, as we have all learned, stuff happens! So, before you click everyone in their car seats, call or check the Facebook page and website to make sure your destination is open, hours are still the same, and if any of their normal activities are limited.

## Follow your faves on Facebook and Instagram.

Websites can share a ton of information, but for your go-to favorites, follow them on social media. Hear about the new stuff as it happens!



Join our Facebook page!

### Are you a parent, caregiver, guardian or grandparent?

If you would like to receive more daily connections, tips and events for your family, join the Wayne Parent Coalition Facebook Group.



@gscwayne



@greatstartcollabwayne



Greatstart.org

## Do you work with children and families?

Child care providers, libraries, human services programs, public, private and parochial schools, medical, dental and mental health providers - share great info with your families - add the three Great Start links to your website!

**Everybody Ready for a Great Start!** [greatstart.org](http://greatstart.org)  
**Daily Calendar of Fun Events!** [greatstart.org/findfun](http://greatstart.org/findfun)  
**Helpful Resources for Families - TODAY!** [greatstart.org/findhelp](http://greatstart.org/findhelp)

Also, check out the Great Start Provider page for job postings, training and best practices. [greatstart.org/providers](http://greatstart.org/providers)

See something we missed? Want more copies?  
Let us know! [feedback@greatstartwayne.org](mailto:feedback@greatstartwayne.org)



# WAYNE PARENT COALITION

YOUR KIDS.  
YOUR THOUGHTS.  
YOUR VOICE.

Great Start Wayne Parent Coalition



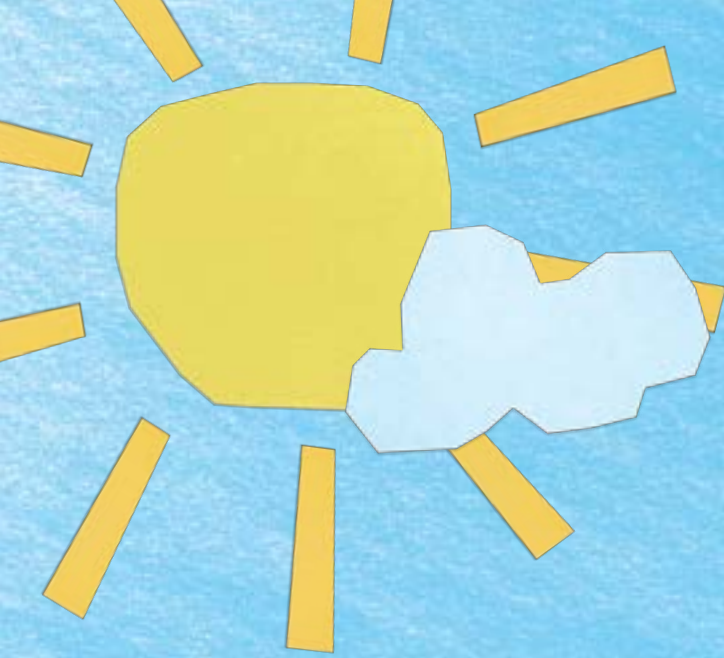
The Great Start Parent Coalition aims to **ENGAGE** families around Wayne County to **EDUCATE** them about programs and resources that support their families. We **EMPOWER** parents to provide their voice to make a difference for their families and their communities!

**Stay connected to:**

**Parent Resources, Play Group Events,  
Monthly Meetings/Training & MORE by  
joining our Facebook group!**

**[BIT.LY/WAYNEPARENTS](https://bit.ly/wayneparents)**

For more information contact:  
**Tiffany Golden**  
[tiffany@greatstartwayne.org](mailto:tiffany@greatstartwayne.org)



OUT



# T & ABOUT 2023

Libraries .....	9
Parks & Nature .....	17
Indoor Playtime .....	32
Museums & Theaters .....	40

## A NOTE ABOUT QR CODES

Use your phone's camera to hover over these barcode-like boxes called **QR codes**.

When the camera comes into focus, a yellow link will pop up on your camera screen. Tap that link to go directly to the website that will help you learn more about a topic or sign up for activities.



Greatstart.org



**Partnering with teachers and families.  
On TV. Online. Statewide.**

For more info  
**SCAN this  
QR CODE!**



**The Michigan Learning Channel (MLC) is a statewide public television partnership offering instructional content to support the education of students and to provide supplemental resources for families and teachers.**

Use an antenna to watch the MLC on your local PBS station, or view the livestream and on-demand content from any device with internet access.

**VISIT [MichiganLearning.org](http://MichiganLearning.org) and follow us on social media to learn more.**



The Michigan Learning Channel is funded through a grant awarded by the Michigan Department of Education and the U.S. Department of Education.

# Need Help Finding Child Care?

Great Start to Quality is the **One Place** to Find the Right Place.



Finding child care can be challenging. Great Start to Quality can help. Use our search tool to tap into a network of licensed child care programs near your home or work.

## The **One Place** to Begin Your Search

- Find licensed child care for children ages birth - 12 years
- Search by zip code, city, or program name
- Filter by your schedule needs - days, nights, before and after school
- Compare hours, costs, and age of children in program
- Find information about financial assistance
- Learn about program quality

Visit [www.greatstarttoquality.org](http://www.greatstarttoquality.org) or call a Resource Center for assistance: **1.877.614.7328**



Funding from the Office of Great Start within the Michigan Department of Education supports the implementation of Great Start to Quality.

GREAT  
START TO  
**Quality**



**Scan to Find Quality Child Care.**



Out & About  
videos here.

[Youtube.com/channel/  
UCfOLBb0yYVHD  
byhgS5ha4Q](https://www.youtube.com/channel/UCfOLBb0yYVHDbyhgS5ha4Q)



Find Fun event  
calendars here.

[GreatStart.org/findfun](https://www.GreatStart.org/findfun)



Lower Huron Metropark



# Find Fun



# LIBRARIES



Libraries in a Fun Guide? Absolutely! Your local library has much more to offer than just **free books, free movies and free music!**

Lots of libraries now check out **free toys and games**, as well as **free programs** to fill your child's days with stories, songs and play.

Visit your local library today, or venture out to visit a library you've never tried before.  
**All are welcome!**

### **Allen Park**

[allenparklibrary.org](http://allenparklibrary.org)

8100 Allen Rd, Allen Park  
313-381-2425

### **Belleville**

[belleville.lib.mi.us](http://belleville.lib.mi.us)

167 4th St, Belleville  
734-699-3291

### **Canton**

[cantonpl.org](http://cantonpl.org)

1200 S Canton Center Rd,  
Canton  
734-397-0999

### **Dearborn**

**Main Branch**

[dearbornlibrary.org](http://dearbornlibrary.org)

16301 Michigan Ave,  
Dearborn  
313-943-2330

### **Dearborn**

**Bryant Branch**

[dearbornlibrary.org](http://dearbornlibrary.org)

22100 Michigan Ave,  
Dearborn  
313-943-4091

### **Dearborn**

**Esper Branch**

[dearbornlibrary.org](http://dearbornlibrary.org)

12929 W Warren,  
Dearborn  
313-943-4096

### **Dearborn Heights**

**Caroline Kennedy**

[dhcl.michlibrary.org](http://dhcl.michlibrary.org)

24590 George St,  
Dearborn Heights  
313-791-3800

### **Dearborn Heights**

**John F Kennedy Jr.**

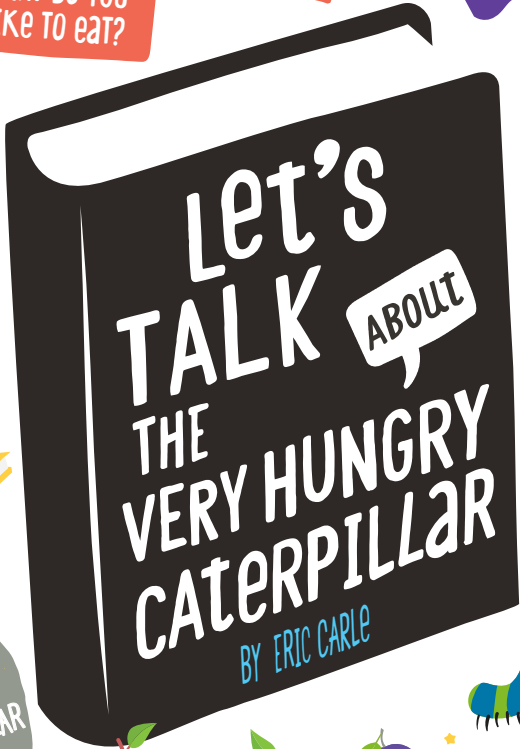
[dhcl.michlibrary.org](http://dhcl.michlibrary.org)

24602 Van Born Rd,  
Dearborn Heights  
313-791-6050



Check our calendar  
for fun reading  
events today!

WHAT DO YOU LIKE TO eat?



WHAT HAPPENS TO ME?

WHAT DOES THE CATERPILLAR EAT?



[greatstart.org/talkingisteaching](http://greatstart.org/talkingisteaching)



# DETROIT

## **Bowen Branch**

[detroitpubliclibrary.org](http://detroitpubliclibrary.org)

3648 Vernor Hwy, Detroit  
313-481-1540

## **Campbell Branch**

[detroitpubliclibrary.org](http://detroitpubliclibrary.org)

8733 West Vernor Hwy,  
Detroit  
313-481-1550

## **Chandler Park Branch**

[detroitpubliclibrary.org](http://detroitpubliclibrary.org)

12800 Harper, Detroit  
313-481-1560

## **Chaney Branch**

[detroitpubliclibrary.org](http://detroitpubliclibrary.org)

16101 Grand River Ave,  
Detroit  
313-481-1570

## **Duffield Branch**

[detroitpubliclibrary.org](http://detroitpubliclibrary.org)

2507 West Grand Blvd,  
Detroit  
313-481-1710

## **Edison Branch**

[detroitpubliclibrary.org](http://detroitpubliclibrary.org)

18400 Joy Rd, Detroit  
313-481-1720

## **Elmwood Park Branch**

[detroitpubliclibrary.org](http://detroitpubliclibrary.org)

550 Chene, Detroit  
313-481-1730

## **Franklin Branch**

[detroitpubliclibrary.org](http://detroitpubliclibrary.org)

13651 East McNichols Rd,  
Detroit  
313-481-1740

## **Jefferson Branch**

[detroitpubliclibrary.org](http://detroitpubliclibrary.org)

12350 East Outer Dr,  
Detroit  
313-481-1760

## **Knapp Branch**

[detroitpubliclibrary.org](http://detroitpubliclibrary.org)

13330 Conant St,  
Detroit  
313-481-1770

## DETROIT cont.

### **Lincoln Branch**

[detroitpubliclibrary.org](http://detroitpubliclibrary.org)

1221 East 7 Mile, Detroit  
313-481-1780

### **Parkman Branch**

[detroitpubliclibrary.org](http://detroitpubliclibrary.org)

1766 Oakman Blvd, Detroit  
313-481-1810

### **Sherwood Forest Branch**

[detroitpubliclibrary.org](http://detroitpubliclibrary.org)

7117 West 7 Mile Rd, Detroit  
313-481-1840

### **Main Branch**

[detroitpubliclibrary.org](http://detroitpubliclibrary.org)

5201 Woodward Ave, Detroit  
313-481-1300

### **Redford Branch**

[detroitpubliclibrary.org](http://detroitpubliclibrary.org)

21200 Grand River Ave,  
Detroit  
313-481-1820

### **Wilder Branch**

[detroitpubliclibrary.org](http://detroitpubliclibrary.org)

7140 East 7 Mile Rd, Detroit  
313-481-1870

## GROSSE POINTE

### **Central Branch**

[grossepointelibrary.org](http://grossepointelibrary.org)

120 Kercheval,  
Grosse Pointe Farms  
313-343-2074

### **Ewald Branch**

[grossepointelibrary.org](http://grossepointelibrary.org)

15175 East Jefferson,  
Grosse Pointe Park  
313-821-8830

### **Woodsw Branch**

[grossepointelibrary.org](http://grossepointelibrary.org)

20680 Mack Ave,  
Grosse Pointe Woods  
313-343-2072

### **Ecorse**

[ecorse.lib.mi.us](http://ecorse.lib.mi.us)

4184 W Jefferson Ave, Ecorse  
313-389-2030

### **Garden City**

[gardencitylib.org](http://gardencitylib.org)

31735 Maplewood St,  
Garden City  
734-793-1830

### **Inkster**

**Leanna Hicks Public  
Library**

[inkster.lib.mi.us](http://inkster.lib.mi.us)

2500 Hamlin Drive,  
Inkster  
313-563-2822

### **Livonia**

**Carl Sandburg Branch**

[livonialibrary.info](http://livonialibrary.info)

30100 West 7 Mile Rd,  
Livonia  
248-893-4010

### **Flat Rock**

[frlib.org](http://frlib.org)

25200 Gibraltar Rd,  
Flat Rock  
734-782-2430

### **Harper Woods**

[harperwoodslibrary.org](http://harperwoodslibrary.org)

19601 Harper Ave,  
Harper Woods  
313-343-2575

### **Lincoln Park**

[lincoln-parklibrary.org](http://lincoln-parklibrary.org)

1381 Southfield Rd,  
Lincoln Park  
313-381-0374



**Livonia**

**Civic Center Branch**  
[livonialibrary.info](http://livonialibrary.info)

32777 5 Mile Rd, Livonia  
734-466-2491

**Melvindale**

[melvindale.lib.mi.us](http://melvindale.lib.mi.us)

18650 Allen Rd, Melvindale  
313-429-1090

**Plymouth**

[plymouthlibrary.org](http://plymouthlibrary.org)

223 S Main St, Plymouth  
734-453-0750

**River Rouge**

[river-rouge.lib.mi.us](http://river-rouge.lib.mi.us)

221 Burke St, River Rouge  
313-843-2040

**Livonia**

**Vest Pocket**

[livonialibrary.info](http://livonialibrary.info)

15218 Farmington Road,  
Livonia  
734-466-2559

**Northville**

[northvillelibrary.org](http://northvillelibrary.org)

212 Cady St, Northville  
248-349-3020

**Redford**

[rtdl.org](http://rtdl.org)

25320 W 6 Mile, Redford  
313-531-5960

**Riverview**

[riverview](http://riverview)

[publiclibrary.com](http://publiclibrary.com)

14300 Sibley Rd, Riverview  
734-283-1250



### **Romulus**

[romuluslibrary.org](http://romuluslibrary.org)

11121 Wayne Rd, Romulus  
734-942-7589

### **Trenton**

**Veterans Memorial**

[trenton.lib.mi.us](http://trenton.lib.mi.us)

2790 Westfield Rd,  
Trenton  
734-676-9777

### **Westland**

**William P. Faust Library**

[westlandlibrary.org](http://westlandlibrary.org)

6123 Central Pkwy,  
Westland  
734-326-6123

### **Southgate**

**Veterans Memorial  
Library**

[southgate.lib.mi.us](http://southgate.lib.mi.us)

14680 Dix Toledo Rd,  
Southgate  
734-258-3002

### **Wayne**

[wayne.lib.mi.us](http://wayne.lib.mi.us)

3737 S Wayne Rd, Wayne  
734-721-7832

### **Wyandotte**

**Bacon Memorial Library**

[baconlibrary.org](http://baconlibrary.org)

45 Vinewood St,  
Wyandotte  
734-246-8357

# OUTDOOR FUN

ALL YEAR LONG

Special places to explore outdoors!



Find more parks  
& nature here.

## **Allen Woods Nature Preserve**

[smicland.org](http://smicland.org)

12398 Allen Rd, Southgate  
734-484-6565

Natural land and open spaces including forests, wetlands, meadows, agricultural lands, and places of scenic beauty.

## **Apple Charlie's Orchards**

[facebook.com/Apple-Charlies-South-Huron-Orchards-148821038487766](https://www.facebook.com/Apple-Charlies-South-Huron-Orchards-148821038487766)

38035 S Huron Rd,  
New Boston  
734-753-9380

Fruit picking sessions & farm animals to feed at an orchard selling apple donuts, pies & ciders.

# **BELLE ISLE**

## **Belle Isle State Park**

[www2.dnr.state.mi.us/parksandtrails/Details.aspx?type=SPRK&id=736](http://www2.dnr.state.mi.us/parksandtrails/Details.aspx?type=SPRK&id=736)

Riverbank Dr, Detroit  
313-821-9844

Designated swimming beach, open daily Memorial Day through Labor Day.

## **Belle Isle Nature Center**

[belleislenaturecenter.detroitzoo.org](http://belleislenaturecenter.detroitzoo.org)

176 Lakeside Dr, Detroit  
313-852-4056

Offers lots of nature programs for all ages year-round. New renovations include animal habitats and hands-on activities for kids.

## **Belle Isle Aquarium**

[belleisleconservancy.org](http://belleisleconservancy.org)

3 Inselruhe Ave, Detroit  
313-331-7760

Oldest aquarium in the country. Features one of the largest collections of air-breathing fish in the world.

## Beacon Park

[downtowndetroitparks.com/  
parks/beacon-park](http://downtowndetroitparks.com/parks/beacon-park)

1901 Grand River Ave, Detroit  
313-566-8250

Seasonal events include  
free exercise classes, play  
sculptures and festivals.

## Crosswinds Marsh Wetland Interpretive Preserve

[tinyurl.com/ychkj77f](http://tinyurl.com/ychkj77f)

27600 Haggerty Rd,  
New Boston  
734-654-1220

Explore diverse wetland  
habitats including a nesting pair  
of bald eagles, beaver and other  
exciting native wildlife.

## Dequindre Cut

[detroitriverfront.org/  
riverfront/dequindre-cut/  
dequindre-cut](http://detroitriverfront.org/riverfront/dequindre-cut/dequindre-cut)

Dequindre Cut Greenway,  
Detroit  
313-566-8200

Two-mile paved greenway  
starting at the riverfront.  
Offers many fun activities  
throughout the year.

## Campus Martius Park

[downtowndetroit.org/  
experience-downtown/  
downtown-detroit-parks/  
campus-martius](http://downtowndetroit.org/experience-downtown/downtown-detroit-parks/campus-martius)

800 Woodward Ave, Detroit  
313-963-9393

Year-round events include  
ice skating, outdoor  
movies and festivals.

## DeBuck's Corn Maze & Pumpkin Patch

[debuckscornmaze.com](http://debuckscornmaze.com)

50240 Martz Rd, Belleville  
734-260-0334

Enjoy 3 corn mazes, a 25-acre  
U-Pick pumpkin patch, wagon  
rides, corn box, trike track, tube  
slide, double trouble slides, goat  
village, bouncy balls and more.

## Detroit River International Wildlife Refuge

[fws.gov/refuge/detroit-  
river](http://fws.gov/refuge/detroit-river)

5437 West Jefferson Ave.  
Trenton  
734-365-0219

Unique opportunities to explore  
over 40 miles of Detroit River  
and Lake Erie shoreline habitat.

WHAT ARE THE  
SMALLEST AND  
BIGGEST ANIMALS?

WHAT  
WILL YOU  
SEE?

WHAT  
IS A  
HABITAT?

WHAT SOUNDS  
DO YOU HEAR?

LET'S  
TALK  
ABOUT  
THE  
DETROIT  
ZOO

TALKING IS  
TEACHING.

TALK  
READ  
SING



[greatstart.org/talkingisteaching](http://greatstart.org/talkingisteaching)

**Detroit Riverfront  
Robert C. Valade Park**

[detroitriverfront.org](http://detroitriverfront.org)

588 E Jefferson, Detroit

Attractions include parks, plazas, art exhibits, pathways, a carousel and water play all along the Detroit Riverfront.

**Edsel & Eleanor  
Ford House**

[fordhouse.org](http://fordhouse.org)

1100 Lake Shore Rd,  
Grosse Pointe Shores  
313-884-4222

Check website for monthly family events including storytimes and exploration.

**Greenmead  
Historical Park**

[livonia.gov/211/Greenmead-Historical-Park](http://livonia.gov/211/Greenmead-Historical-Park)

4250 Elizabeth Dr, Trenton  
734-675-1476

The park includes the historical Greenmead Farm and its outbuildings, a 13-building historical village, Greenmead Community Garden, Virginia B. Matley Nature Trail, and soccer fields.

**Detroit Zoo**

[detroitzoo.org](http://detroitzoo.org)

8450 W 10 Mile Rd, Royal Oak  
248-541-5717

The Detroit Zoo is home to animals from A to Z, including anteaters and zebras and hundreds of other species in between.

**Elizabeth County Park**

[waynecounty.com/departments/publicservices/parks/elizabeth-park.aspx](http://waynecounty.com/departments/publicservices/parks/elizabeth-park.aspx)

4250 Elizabeth Dr, Trenton  
734-675-1476

Pony rides, playscapes, picnic areas and a skate park make this park well worth a visit. Features over 1300 feet of riverwalk for fishing and views.

**Hemlock Park**

[cityofdearborn.org/services/recreation/parks-in-dearborn](http://cityofdearborn.org/services/recreation/parks-in-dearborn)

13335 Hemlock, Dearborn  
313-943-2350

Spray park, ball field, sledding hill, soccer field, basketball, shelter area, walking track, and wheelchair-accessible playground.

## **Heritage Park Petting Farm**

[tinyurl.com/yjnrhve](http://tinyurl.com/yjnrhve)

734-287-6550

Fishing pond, historic buildings, petting zoo, playground and trails.

## **Holliday Forest & Wildlife Preserve**

[tinyurl.com/ybfzrss2](http://tinyurl.com/ybfzrss2)

33175 Ann Arbor Trl, Westland  
734-261-1990

Explore unique nature along the rugged 10-mile trail.

## **Midway Sports & Entertainment**

[midwayfun.com](http://midwayfun.com)

22381 Van Born Rd, Taylor  
313-277-9156

Outdoor amusement park features 2 Caribbean-themed mini-golf courses, go-karts & water balloon wars.

## **Hines Park**

[waynecounty.com/  
departments/publicservices/  
parks-recreation.aspx](http://waynecounty.com/departments/publicservices/parks-recreation.aspx)

734-261-1990

17-mile bike path along the Rouge River with over 20 unique parks, playgrounds and special seasonal events including the Wayne County Lightfest.

## **Maybury State Park, Farm & Stables**

[tinyurl.com/npajzsb](http://tinyurl.com/npajzsb)

49601 Eight Mile Rd, Northville  
248-349-8390

Playgrounds, hiking trails and picnic shelters. Maybury Farm offers honey harvesting demonstrations, sheep shearing and more. Maybury Riding Stable offers scenic guided trail rides to the public.

## **Monroe Street Midway**

[deckedoutdetroit.com/midway](http://deckedoutdetroit.com/midway)

32 Monroe Street, Detroit

Summer activities for family-friendly outdoor fun and relaxation. Activities include roller skating, live music and food trucks.

## **Milliken State Park**

[tinyurl.com/yrbw3zju](http://tinyurl.com/yrbw3zju)

1900 Atwater Street, Detroit  
313-396-0217

Located near many major downtown attractions and provides easy access for fishing, biking, walking and rollerblading on a paved trail.

## **Obstbaum Orchards**

[www.obstbaum.com](http://www.obstbaum.com)

9252 Currie Rd, Northville  
734-560-2840

Fresh-picked apples, pressed cider and doughnuts, plus hayrides, pumpkins, seasonal crafts and more.

## **Plymouth Orchards**

[plymouthorchards.com](http://plymouthorchards.com)

10685 Warren Rd, Plymouth  
734-455-2290

Pick pumpkins and enjoy cider and doughnuts along with wagon rides and petting zoo.

## **Nankin Mills**

[www.waynecounty.com/departments/publicservices/parks/nankin-mills.aspx](http://www.waynecounty.com/departments/publicservices/parks/nankin-mills.aspx)

33175 Ann Arbor Trail, Westland  
734-261-9498

Interpretive Center features three floors of displays highlighting Native American history, Underground Railroad and Henry Ford's mill. Home to many live animal exhibits interactive displays.

## **Parmenter's Northville Cider Mill**

[northvillecider.com](http://northvillecider.com)

714 Baseline Rd, Northville  
248-349-3181

Train Play Escape and Monster Truck area as well as homemade pies, pumpkin butter, cider and more.

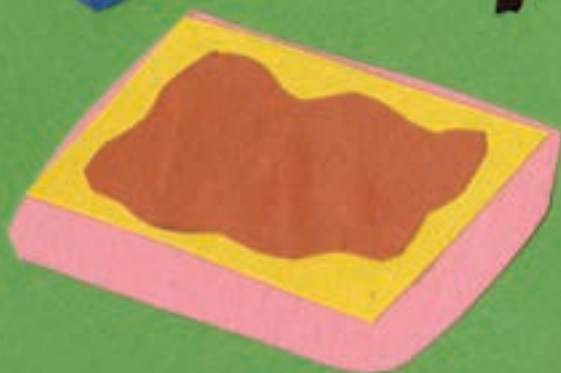
## **Taylor Conservatory & Botanical Garden**

[taylorconservatory.org](http://taylorconservatory.org)

22314 Northline Rd, Taylor  
888-383-4108

Yoga, evening summer concerts, kids programs and more.





Find seasonal fun here!



[greatstart.org/winter-fun](https://greatstart.org/winter-fun)



[greatstart.org/splash-pads-swimming-pools](https://greatstart.org/splash-pads-swimming-pools)

# METROPARKS

## Delhi Metropark

3902 E Delhi Rd, Ann Arbor  
734-426-8211

Let your child's imagination soar with an adventure play ship, swings, slides and riding toys. Canoe and kayak rentals available.

## Hudson Mills Metro

8801 N Territorial Rd, Dexter  
734-426-8211

Three picnic shelters, swings, slides, a canoe camp, a group camp, children's play area and shuffleboard courts. Groomed cross-country ski trails provide hours of outdoor fun throughout the winter.

## Indian Springs Metropark

5200 Indian Trail, White Lake  
248-625-6640

In summertime, kids can cool off at the Spray 'n' Play grounds with Adventure Maze, rock-climbing wall and playground. Wintertime offers cross country skiing and a sledding hill. The Discovery Center features an underwater pond viewing room.

## Dexter-Huron Metropark

6535 Huron River Dr, Dexter  
734-426-8211

This heavily wooded park offers shady picnic areas, swings, slides, a softball diamond, fishing, and convenient canoe launching.

## Huron Meadows Metropark

8765 Hammel Rd, Brighton  
734-426-8211

Three picnic areas, hiking trails and children's play area are found in this 1,540 acre park with a lake and an oak forest.

## Kensington Metropark

4570 Huron River Pkwy,  
Milford  
810-227-8910

Kent Lake offers plenty of fun activities; swim at Martindale or Maple beaches, or get soaked at the Splash 'n' Blast. Hand feed a bird at the Nature Center or visit the chickens, sheep and cattle at the historic Farm Center.



Wheelchair  
accessible trail map

## OUTDOOR FUN



Lower Huron Metropark



Check park websites or the Great Start Find Fun Calendar for the many awesome events these parks offer each week, including storytimes, craft activities and festivals.

# Metropark Pass

What do you get when you have a Metroparks annual pass?

Access to all 13 Huron-Clinton Metroparks properties every day of the year!

That means 365 days of nature, exploration, fun and relaxation.



Order your metropark pass here!

# State Park Pass

The Recreation Passport is your very own key to visiting more than 100 state parks and recreation areas, hundreds of boating access sites, state forest campgrounds, thousands of miles of trails and other destinations - all year long!

Just check "yes" when you renew your license plate.

Order your state park pass here!





Michigan Activity Pass  
Presented by:



# michiganactivitypass.info

Discover Michigan using your library card, check out a pass for one of Michigan's cultural destinations or state parks and recreation areas!

For more information visit:

**michiganactivitypass.info**

Check out one  
Michigan Activity Pass (MAP)  
per library card every 7 days

You will have 7 days from the date reserved to use your MAP pass.

Prior to your visit, please call ahead or check the destination's website to verify hours of operation.

For directions on how to check out a MAP pass see:  
<https://tl.lib.mi.us/map/files/MAP-HOWTO.pdf>



## Lake Erie Metropark

32481 W Jefferson Ave,  
Brownstown  
734-379-5020

Offers 3 miles of captivating Lake Erie shoreline and sweeping vistas. Visit the new children's play area with slides, mini-rock wall and swings. The Great Wave pool offers three-foot waves with rafts, and a new spray and splash area.

## Lower Huron Metropark

40151 E Huron River Dr,  
Belleville  
734-697-9181

In the summer, coast down two water slides or drift along the lazy river at the Turtle Cove Family Aquatic Center. Be sure to visit the new, unique space-themed playground.

## Stony Creek Metropark

4300 Main Park Dr,  
Shelby Twp  
586-781-4242

Check out the gigantic Quadzilla Slide, visit the Nature Center and enjoy some of the best hiking trails in Metro Detroit. Two sandy beaches to enjoy during summer and sledding hills in the winter provide year-round fun.

## Lake St. Clair Metropark

31300 Metro Pkwy,  
Harrison Twp  
586-463-4581

Families can enjoy a 1,000 foot-long sandy beach, an Olympic sized swimming pool with waterslides and a S squirt Zone Spray park. Several play areas, a Nature Center and adventure golf make this a great park to spend the whole day.

## Oakwoods Metropark

32911 Willow Rd, New Boston  
734-782-3956

Offers scenic hiking trails, a pond for fishing and a Nature Center home to turtles and other reptiles. The Cedar Knoll picnic area hosts a butterfly viewing area designated as a monarch waystation.

## Willow Metropark

23200 South Huron Road,  
New Boston  
734-697-9181

Features a large pool with water slides, spray area and zero depth entry. Families will also enjoy several playscapes, hiking, biking and kayak/canoe rentals.

## Wolcott Mill

63841 Wolcott Rd, Romeo  
586-749-5797

Visit a late-20th century working farm with cows, horses, sheep and goats. The Historic Center boasts one of the few remaining feed mills and the barn museum showcases antique farm equipment. Several times each year the farm offers horse drawn wagon rides.



Let's  
TALK ABOUT  
NATURE

LET'S COUNT THE TREES!

WHAT CAN YOU HEAR?

WHAT CAN YOU SMELL?

WHAT DO TREES NEED TO GROW?

CAN YOU SAY WHALE?

WHAT WORDS RHYME WITH WHALE?

WHAT OTHER ANIMALS LIVE UNDERWATER?

TALKING IS TEACHING. **TALK READ SING**



[greatstart.org/talkingisteaching](http://greatstart.org/talkingisteaching)



## SCIENTISTS HAVE TAKEN HUNDREDS OF STEPS TO OPEN THIS DOOR.

**Developed by a proven process, the COVID-19 vaccine is safe and effective.**

Decades of research, followed by months of clinical development. Tens of thousands of diverse volunteers in clinical trials. Scientists and doctors worldwide have joined forces to bring us a safe, effective vaccine for COVID-19... and help give us our lives back. **Learn more at [Michigan.gov/COVIDvaccine](https://Michigan.gov/COVIDvaccine).**



# INDOOR PLAYTIME

Weather not right for playing outside?  
We've got you covered with great indoor fun and adventure.



Be sure to check our website for lots of  
great ideas to keep kids active indoors!

## **Airtime Trampoline & Game Park**

[airtimetrampoline.com](http://airtimetrampoline.com)

36901 Warren Rd, Westland  
734-215-2400

Trampoline fun. Also features foam pits, dodgeball and basketball.

## **Dino Land**

[mydinoland.com](http://mydinoland.com)

26450 Ford Rd,  
Dearborn Heights  
313-551-3626

Dinosaur themed family fun entertainment center with interactive arcade games, laser tag, bumper cars, toddler play area, play structure and virtual reality attractions.

## **Fun Zonez**

[fun-zonez.com](http://fun-zonez.com)

27200 Joy Road,  
Redford Twp.  
313-888-6677

Soft play area designed to be fun and spacious for infants and toddlers. Parents/caregivers and infants under 12 months are free.

## **Kidcadia Play Cafe**

[kidcadia.com](http://kidcadia.com)

13939 Michigan Ave, Dearborn  
313-771-9000

A space that will inspire your child's creativity, boost their imagination, and allow them to run freely.

## **Arts & Scraps**

[artsandscraps.org](http://artsandscraps.org)

16135 Harper, Detroit  
313-640-4411

Detroit nonprofit organization that recycles tons of material to help children think, create and learn.

## **DNR Outdoor Adventure Center**

[www.michigan.gov/oac](http://www.michigan.gov/oac)

1801 Atwater St. Detroit  
844-622-6367

Family-friendly, accessible indoor activities that highlight the natural environments of Michigan's outdoors.

## **Jungle Java**

[junglejavaplay.com](http://junglejavaplay.com)

6481 Canton Center Rd,  
Canton  
734-927-6680

Relax with a cup of coffee while kids play in a soft play center.

## **Mandee's Funtastic Play Center**

[mandeesfuntasticplaycenter.webnode.page](http://mandeesfuntasticplaycenter.webnode.page)

20372 Van Horn Rd.  
Woodhaven  
734-692-3867

Indoor playground with large soft play area and two-story padded playscape.

## **Play Atlantis**

[playatlantis.com](http://playatlantis.com)

19400 Allen Rd, Melvindale  
734-250-7206

Family fun center with go karts, laser tag, bounce houses and toddler zone.

## **Sky Zone Indoor Trampoline Park**

[skyzone.com](http://skyzone.com)

42550 Executive Dr. Canton  
734-981-0007

Fly high at open jump, Foam Zone, SkyRobics, Ultimate Dodgeball and SkySlam.

## **Yoyo's Fun Center**

[yoyosfuncenter.com](http://yoyosfuncenter.com)

8044 N. Middlebelt Rd,  
Westland  
734-956-5500

Enjoy our play area complete with jungle gyms, trampolines and ball pits.

## **Zap Zone**

[zap-zone.com](http://zap-zone.com)

41953 Ford Rd, Canton  
734-844-7746  
9751 Telegraph Rd. Taylor  
313-299-9690

Join the exciting adventure with laser tag, bumper cars, jump zones and more.



**INDOOR PLAYTIME**

# Talk, Read, and Sing Together Every Day!

## Tips for Families

LET'S TALK ABOUT  
**THE CITY!**



Talk about the colors of traffic lights and what they mean.

#TALKINGISTEACHINGTIPS  **ESMALL TO FAIL** 

LET'S TALK ABOUT  
**FOOD!**



Use words to describe how food tastes, feels, or smells. Ask questions like, "What does it taste like? Feel like? Look like?"

#TALKINGISTEACHINGTIPS  **ESMALL TO FAIL** 

Find more tips for families in English, Arabic, and Spanish at:  
[greatstart.org/talkingisteaching](https://greatstart.org/talkingisteaching)

When you talk, read, and sing with your child – even before they can use words – you’re helping them learn. And making them happier too!

Research shows that talking, reading and singing with your child every day from birth helps build their brains as well as important language, math, reading and social skills for use in school and beyond. Talk, read and sing with your child in the language you are most comfortable using.

You probably naturally talk to your baby about the events of the day. Keep doing it, and do it more! The more words and conversations you share together, the better prepared they will be to learn. You are your baby’s first teacher!

LET'S TALK ABOUT  
**ANIMALS!**



Sing "Old MacDonald" with your child, and change the words to animals or objects you see in your home or neighborhood. Take turns picking animals to sing about!



#TALKINGISTEACHINGTIPS  **SMALL TO FAIL** 

LET'S TALK ABOUT  
**BEDTIME!**



During bedtime, hold your baby close and sing your baby a lullaby.



#TALKINGISTEACHINGTIPS  **SMALL TO FAIL** 



**TOO SMALL  
TO FAIL**



# COMMUNITY PARKS & REC

Your local parks & rec department is an amazing place for low-cost fun, with classes, programs & activities for all ages, swim lessons, open gyms and more! Check with your city or find your local center here:

↪ [greatstart.org/parks](https://greatstart.org/parks) ↩







[greatstart.org/talkingisteaching](http://greatstart.org/talkingisteaching)

TALKING IS  
TEACHING.

TALK  
READ  
SING

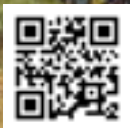


# MUSEUMS & THEATERS

**DID YOU KNOW?**

**SNAP/EBT and WIC cardholders receive discounted admission and free parking to many museums. Many are charging only a \$3 admission. Check [museums4all.org](http://museums4all.org) before you go!**

**And of course, our fantastic Detroit Institute of Arts is always free for Wayne County residents!**



## **Arab American National Museum**

[arabamericanmuseum.org](http://arabamericanmuseum.org)

13624 Michigan Ave, Dearborn  
313-429-2535

Family-friendly exhibits and crafts. Check calendar for English-Arabic storytimes and family-friendly holiday events.

## **Charles H. Wright Museum Of African American History**

[thewright.org](http://thewright.org)

3115 E Warren Ave, Detroit  
313-494-5800

Explore and celebrate African American history and culture. Offers many family friendly events and celebrations throughout the year.

## **Detroit Historical Museum**

[detroithistorical.org](http://detroithistorical.org)

5401 Woodward Ave, Detroit  
313-833-1805

Enjoy cobblestone streets, 19th century stores, an auto assembly line, toy trains, a fur trading post and more.

## **Automotive Hall of Fame**

[automotivehalloffame.org](http://automotivehalloffame.org)

21400 Oakwood Blvd, Dearborn  
313-240-4000

Next door to The Henry Ford. See the Automotive Hall of Fame and a replica of the first gas-powered auto.

## **Compuware Arena Drive-In**

[summerdrivein.com](http://summerdrivein.com)

14900 Beck Rd, Plymouth 48170  
734-453-8400

Drive up and enjoy first-run double features seven nights a week.

## **Detroit Institute Of Arts**

[dia.org](http://dia.org)

5200 Woodward Ave, Detroit  
313-833-7900

Drop-in art activities, puppet shows, artist demos and kid-friendly Sundays.

**Detroit Symphony  
Orchestra**

[dso.org](http://dso.org)

Max M Fisher Music Center  
5200 Woodward Ave, Detroit  
313-833-7900

Tiny Tots concerts and Young  
People's Family concerts.

**Ford Community  
& Performing Arts**

[dearborntheatre.com](http://dearborntheatre.com)

15801 Michigan Ave, Dearborn  
313-943-2354

Music acts and community  
groups perform regularly.

**Ford Piquette  
Avenue Plant**

[fordpiquetteplant.org](http://fordpiquetteplant.org)

461 Piquette Ave, Detroit  
313-872-8759

Visit the birthplace  
of the Model T.

**DNR Outdoor  
Adventure Center**

[www.michigan.gov/oac](http://www.michigan.gov/oac)

1801 Atwater St. Detroit  
844-622-6367

Experience exciting nature  
adventures with hands-on  
activities, exhibits and  
simulators. Features a huge  
indoor tree and waterfall.

**Ford Drive-In**

[forddrivein.com](http://forddrivein.com)

10400 Ford Rd, Dearborn  
313-846-6910

Always a double feature.  
In-car theaters now available.

**Ford Rouge  
Factory Tour**

[thehenryford.org/  
rouge](http://thehenryford.org/rouge)

20900 Oakwood Blvd,  
Dearborn  
313-982-6001

Departs from The Henry Ford.  
See historic footage, learn how  
cars are made and watch  
Ford F-150s being assembled  
and driven off the line.



Check our calendar  
for fun museum  
events today!

## Hellenic Museum Of Michigan

[hellenicmi.org](http://hellenicmi.org)

67 E Kirby St, Detroit  
313-871-4100

Learn about Hellenic culture,  
heritage and history through  
exhibits, and cultural events.

## Greenfield Village

[thehenryford.org/  
village](http://thehenryford.org/village)

20900 Oakwood Blvd,  
Dearborn  
313-982-6001

A vast outdoor museum  
focused on America's past.

## Henry Ford Museum

[thehenryford.org/museum](http://thehenryford.org/museum)

20900 Oakwood Blvd,  
Dearborn  
313-982-6001

Historic attractions, kid activities  
and Macy's 2nd Mondays events  
for preschoolers.



# MUSEUMS & THEATERS

## Mill Race Historical Museum

[millracenorthville.org](http://millracenorthville.org)

215 Griswold Ave, Northville  
248-348-1845

Take a walking tour in a historic village setting. Homes and shops open on Sunday afternoons during the summer and for special holiday events.

## Michigan Science Center

[mi-sci.org](http://mi-sci.org)

5020 John R St, Detroit  
313-577-8400

Hundreds of hands-on exhibits, Cosmic Cafe and Dassault Systemes Planetarium, and Kids Town.

## Motown Historical Museum

[motownmuseum.org](http://motownmuseum.org)

2648 W Grand Blvd, Detroit  
313-875-2264

Step into an era of musical magic and stand where the Temptations, Four Tops, Miracles and Supremes recorded their famous songs.

## Plymouth Historical Museum

[plymouthhistory.org](http://plymouthhistory.org)

155 S Main St, Plymouth  
734-455-8140

Take a stroll in time down our 19th-century Victorian Main Street displaying numerous historical artifacts and large-scale scenes depicting a vibrant community – as it remains today.

## Ukrainian American Archives And Museum Of Detroit

[ukrainianmuseumdetroit.org](http://ukrainianmuseumdetroit.org)

11756 Charest St, Hamtramck  
313-366-9764

See Ukrainian pottery, folk instruments, embroidery and more.





Find Help event  
calendars here.

# FIND HELP

Raising a child can be complicated.  
We are here to help!

Find food, clothes, shelter, help  
with bills and much more in  
"Find Help" on our website.

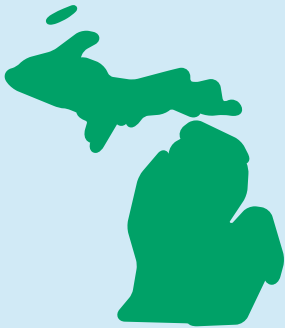
[greatstart.org/findhelp](http://greatstart.org/findhelp)



# HAVE A BRIDGE CARD?



## GET DOUBLE THE FRUITS & VEGGIES WITH DOUBLE UP FOOD BUCKS



### 250+ LOCATIONS

If you have a Bridge Card, you can use Double Up at farmers markets & grocery stores across Michigan.



FIND A PARTICIPATING  
LOCATION AT



[DoubleUpFoodBucks.org](https://DoubleUpFoodBucks.org)



# FOOD HELP HERE

[greatstart.org/  
food](https://greatstart.org/food)





LET'S BRUSH OUR TEETH!  
AT LEAST TWICE A DAY!  
FOR AT LEAST TWO MINUTES!

WHAT DOES A DENTIST DO?

WHAT MAKES YOU SMILE?

HOW DO YOU TAKE CARE OF YOUR TEETH?

WHAT'S YOUR FAVORITE CRUNCHY VEGETABLE? OR FRUIT?

THEY'RE SO GOOD FOR YOUR TEETH!

TALKING IS TEACHING.  
**TALK READ SING**



[greatstart.org/talkingisteaching](http://greatstart.org/talkingisteaching)



Your child's smile is priceless. That's why Healthy Kids Dental protects it at no cost to you.



To find a dentist or learn more about Healthy Kids Dental, visit **[HealthyKidsDental.org](http://HealthyKidsDental.org)**.



The Michigan Department of Health and Human Services (MDHHS) does not discriminate against any individual or group because of race, religion, age, national origin, color, height, weight, marital status, genetic information, sex, sexual orientation, gender identity or expression, political beliefs or disability.

**Healthy Kids Dental:  
the right choice for  
bright smiles.**

# Early Childhood Programs &

## PARENT & FAMILY RESOURCE HOTLINES

844-321-GROW or  
313-410-4588 (Wayne County)  
313-961-BABY (Detroit)

Specialists will assess the needs of parents and families with young children and provide referrals to local family supports to answer questions about how to stay healthy during pregnancy and how to be the best parent you can be through every stage of your baby's development. Specialists will also provide available referrals for supportive services such as employment and training, housing resources, healthcare enrollment (Medicaid, MICHild and Affordable Care Act), food assistance, utility payment assistance, clothing and household items, etc.



# Childhood & Resources

## HELP ME GROW

[helpmegrow-mi.org](http://helpmegrow-mi.org)  
313-410-4588

Are your children on track with their learning and development? Help Me Grow-MI offers a free screening with questions to help you know how they are doing. This parent friendly tool, called the Ages & Stages Questionnaire (ASQ) helps you identify where they might have some challenges or need some extra practice. Help Me Grow provides parents with an individual response for each screening which includes scores, activities to keep children learning, and intervention referrals when extra help might be beneficial. Screenings are for children 1 month - 5 ½ years. Autism Screening is also available, as well as live translation over the phone.

Complete your free screening online at [helpmegrow-mi.org](http://helpmegrow-mi.org) or by phone 313-410-4588.



## Should you be concerned about your child's development?

# Don't worry. But don't wait.

Each baby goes through developmental stages. Here are some sample questions to help you decide if you should ask for help.

By **3 months**, does your baby...

- lift head and chest when lying on stomach?
- coo—chuckle?

By **6 months**, does your baby...

- sit with a little help?
- babble—more than two sounds?

By **12 months**, does your baby...

- pull self to standing—may step with support?
- say two or three words?

By **24 months**, does your baby...

- kick a large ball?
- use two or three words together?

Most parents wonder at times if their child is growing and developing like other children. If you think that your child's growth, learning, or social skills are not the same as other children the same age, the sooner you check it out the better.

**Early On® services are provided at no cost to you.**



**Fill Out a Referral Now**

Scan this QR code using an app on your smartphone or tablet, or type:

[1800earlyon.org/online\\_referral.php](http://1800earlyon.org/online_referral.php)

**1-800-EARLY ON (1-800-327-5966)**

**Wayne County Referrals: (734) 334-1393**



SERVICE  
LEADERSHIP  
COLLABORATION  
EXCELLENCE



*These materials were developed under a grant awarded by the Michigan Department of Education.*





[greatstart.org/talkingisteaching](http://greatstart.org/talkingisteaching)

TALKING IS  
TEACHING.

TALK  
READ  
SING

# FREE PRESCHOOL

## **EARLY HEAD START**

[bit.ly/howtoapplyheadstart](https://bit.ly/howtoapplyheadstart)

[detroitheadstart.com](https://detroitheadstart.com) (Detroit only)

Federally funded community-based comprehensive early childhood program for low-income families with pregnant women, infants, and toddlers up to age three.

## **HEAD START**

[bit.ly/howtoapplyheadstart](https://bit.ly/howtoapplyheadstart)

Federally funded preschool program targeting low income children 3-5 years old and providing a variety of comprehensive services to families including health, nutrition, social services, mandated special education services and parent engagement.

## **GREAT START READINESS PROGRAM**

[bit.ly/4yearoldpreschool](https://bit.ly/4yearoldpreschool)

734-334-1393

Michigan's state funded preschool program for eligible 4-year-old children. Families must meet income criteria established annually by the legislature.





WAYNE COUNTY: NO COST  
**HIGH QUALITY**  
PRESCHOOL NEAR YOU

**Call or Text:**  
**1 (313) 410-4588**

*Translation services available*



[findFREEpreschool.org](http://findFREEpreschool.org)



SERVICE  
LEADERSHIP  
COLLABORATION  
EXCELLENCE



*These materials were developed  
under a grant awarded by the  
Michigan Department of Education.*



# LET'S TALK ABOUT FEELINGS

TODAY  
I FELT...

I GET  
AFRAID  
WHEN...

WHAT  
MAKES  
YOU  
HAPPY?

WHEN I'M  
MAD I  
SHOULD...

HOW DO  
OTHER  
PEOPLE  
FEEL?

WHAT MAKES  
YOU SAD?



[greatstart.org/talkingisteaching](http://greatstart.org/talkingisteaching)

TALKING IS  
TEACHING.

TALK  
READ  
SING

Find mental health for families here!



# Home Visiting

Don't let the name home visiting fool you. These programs are designed to support **women who are pregnant, and parents of infants and young children up to age five.**

A trained professional can meet with you in a variety of ways, virtually, at the park, library, church, local restaurant, another safe location and of course at your home. Your choice! It is nice to have support from someone willing to listen and who knows how to help. **Get the support you need to be the best parent(s) you can be!**

Find your home visiting program at:

[mihomevisiting.com](http://mihomevisiting.com)



## Childcare Providers!

Our events calendar for providers is a must see. Find happenings to fit your every business need.

[greatstart.org/providers](http://greatstart.org/providers)





# Help Me Grow

Detroit-Wayne

## CURIOUS ABOUT YOUR CHILDS DEVELOPMENTAL GROWTH?

We sift through all the resources available so that you don't have to.

- Child Development Screening
- Autism Screening
- Parent Support
- Child Care and Preschool Referrals
- Food, Housing, Diapers, etc.
- Healthcare or Behavior Support
- Home Visiting Programs



Scan me to start the developmental screening!



CALL OR TEXT 313-410-4588

HELPMEGROW@GREATSTARTWAYNE.ORG

WWW.HELPMEGROW-MI.ORG

